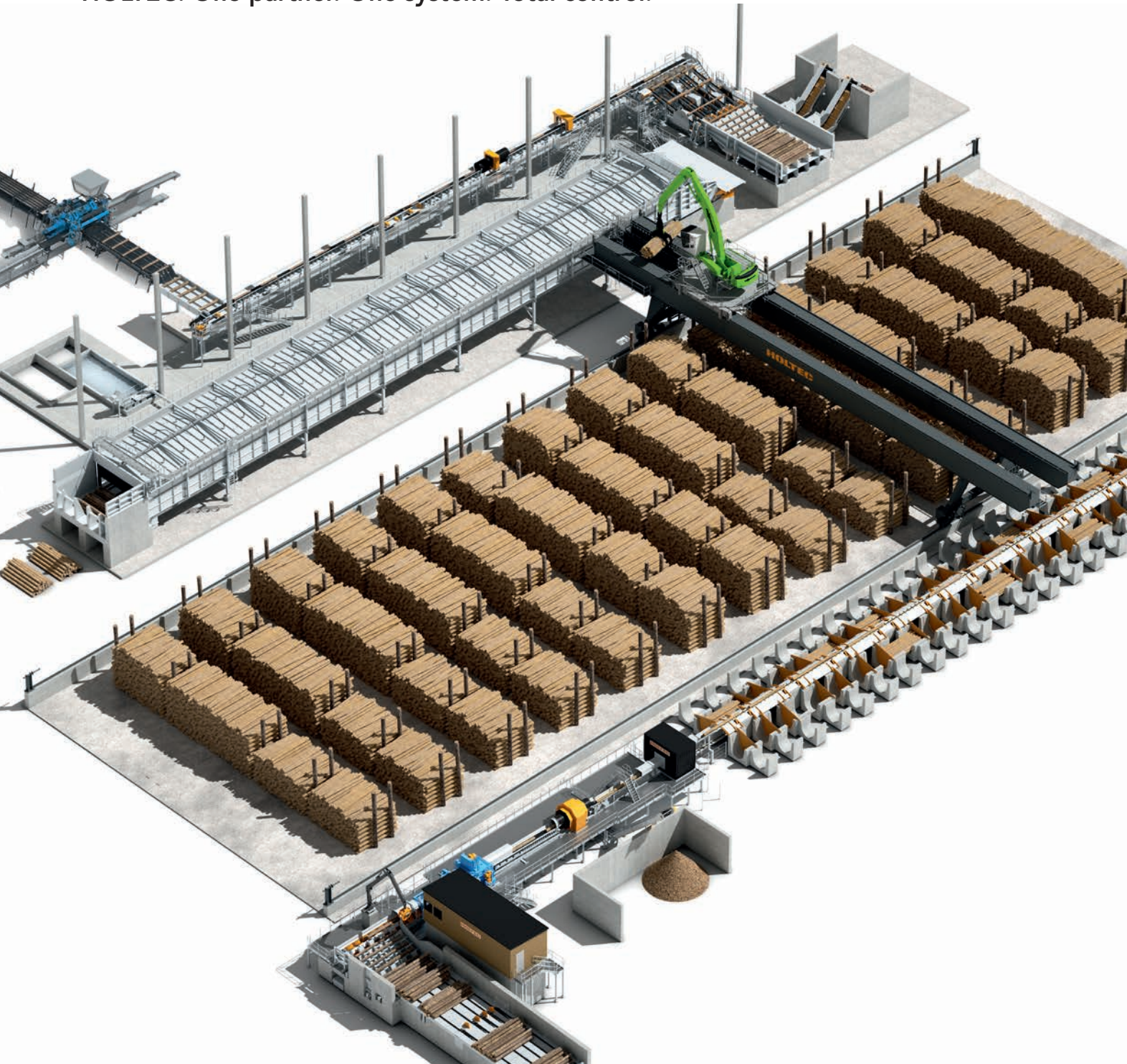


Integrated, Efficient, and Sustainable – HOLTEC’s Turnkey Advantage

HOLTEC delivers more than just cutting-edge conditioning systems – we provide complete, turnkey solutions for industrial-scale log handling. From log sorting to veneer conditioning, our systems are fully integrated and engineered for seamless operation. A key feature of our conditioning line is the use of electrically powered loading and unloading equipment, replacing diesel-powered machines. This dramatically reduces operating costs, emissions, and maintenance while significantly increasing overall efficiency.

Our optional extension: a fully electric portal crane system for complete log yard automation. The VPK Loghandler sets new industry standards with minimal energy consumption, precise control, and optimized space utilization – up to 50% more storage capacity compared to conventional mobile equipment. Whether in veneer or panel production, our holistic approach ensures safety, sustainability, and unmatched productivity across your entire wood yard.

HOLTEC: One partner. One system. Total control.



Contact Sales

Holtec GmbH & Co. KG | Anlagenbau zur Holzbearbeitung
D-53940 Hellenthal | phone: +49 2482 82-0 | sales@holtec.de | www.holtec.de

As we permanently improve and develop our designs, the information and illustrations in this brochure are non-binding.



Have a look at our
YouTube channel.



EV Stand 05 / 2025 – 250

SMARTCON

Smart Conditioning for Maximum Veneer Yield

Continuous log heating redefined – efficient, clean, and fully automated.
Boost productivity and quality with HOLTEC’s advanced thermal tunnel system.



NEXT LEVEL LOG HANDLING



HOLTEC



NEXT LEVEL LOG HANDLING

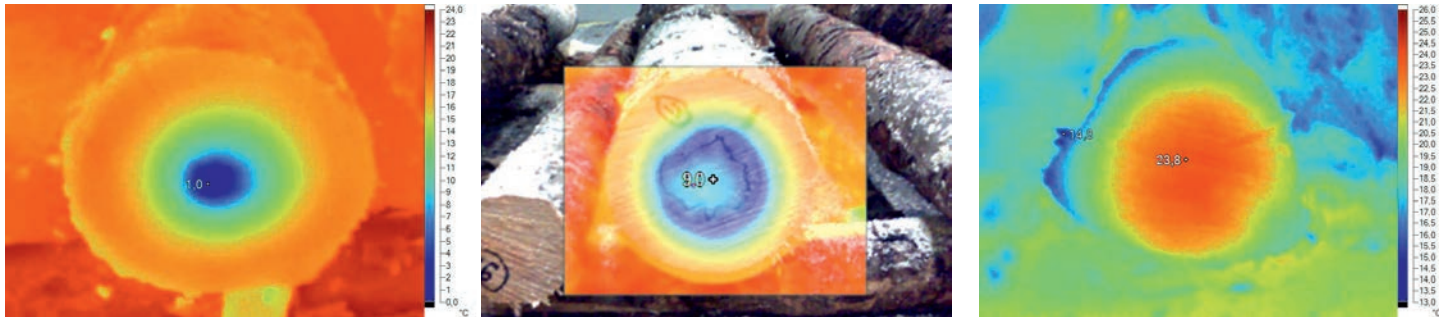
Veneer Block Conditioning – Essential for High-Quality Wood Processing

Before rotary peeling or slicing, veneer blocks must be properly conditioned to plasticize the wood and allow clean, continuous cutting. Without this thermal pre-treatment, especially in colder climates or with frozen logs, processing would result in rough, cracked veneer sheets, poor yield, and excessive material waste. Proper conditioning ensures higher surface quality, reduces splitting and fiber damage, and enhances the overall performance of downstream machinery. Industry research confirms that insufficient heating can significantly reduce veneer recovery rates, while optimized conditioning increases output by up to 25%. Therefore, effective and consistent thermal conditioning is a critical step in maximizing both yield and quality in veneer and plywood production.

HOLTEC’s Continuous Conditioning System – A Technological Breakthrough

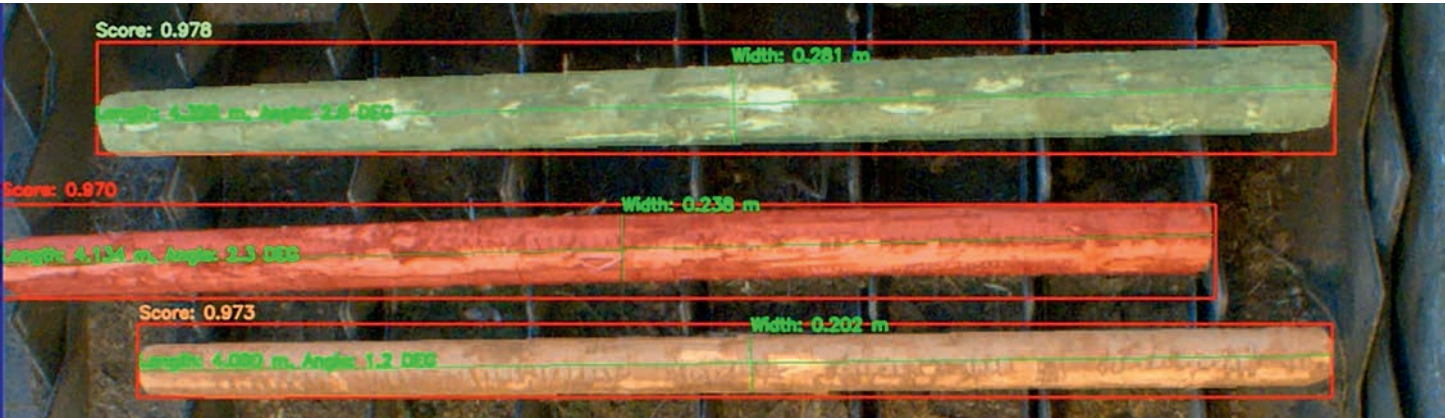
Unlike traditional log ponds or batch steam chambers, HOLTEC’s new system represents a modern, industrial-grade solution for veneer block conditioning. Logs are continuously transported through a fully enclosed tunnel and sprayed with precisely tempered hot water via overhead nozzles. This system ensures uniform heat distribution while maintaining ideal moisture levels throughout the log’s crosssection. The integrated chain conveyor ensures smooth material flow, while the enclosed housing maintains thermal stability and safety during operation. Collected water is filtered, treated, and recirculated, minimizing environmental impact and reducing maintenance time compared to open water basins or steam-based systems.

Conditioning Reimagined: Say goodbye to ponds, pits, and process losses. HOLTEC delivers the industrial solution for tomorrow’s veneer production.



Key Advantages of the HOLTEC Conditioning System

- Industrial-grade, fully automatic operation: Continuous flow with minimal manual intervention ensures consistent conditioning and optimal process integration.
- Clean water recycling – no wastewater discharge: Built-in water purification eliminates the need for complex wastewater treatment, lowering operating costs and environmental risks.
- Fully enclosed and insulated structure: Prevents heat loss, enhances operator safety, and improves energy efficiency.
- Safe and ergonomic operation: Enclosure and automated controls reduce exposure to hot surfaces and steam, significantly improving workplace safety.
- Reduced yard handling and space requirements: Compared to conventional log ponds or steam pits, the HOLTEC system is compact, clean, and easy to maintain.



Expertise that leads the Market – HOLTEC’s Full-Scope Log Handling Solutions

HOLTEC is one of Europe’s leading suppliers for industrial log handling systems – with over 50 years of experience and more than 350 implemented projects across all performance classes. As a full-range provider, we deliver tailor-made, turnkey solutions for the wood industry: from log reception, sorting, and debarking to feeding, scanning, conditioning, and intelligent yard logistics. Our expertise spans every aspect of log yard operations. No matter the application or challenge – whether for sawmills, veneer production, or engineered wood plants – HOLTEC offers the widest portfolio in the market and guarantees a fitting solution. Robust machine design, state-of-the-art automation, and a deep understanding of real-world wood processing needs make us the trusted partner for tomorrow’s timber logistics. With our in-house engineering, electrical systems, and digital integration – including AI-supported handling optimization and remote-controlled cranes – HOLTEC stands for reliability, efficiency, and long-term value. We don’t just build machines. We deliver complete, future-ready solutions.

We don’t just deliver machines – we deliver solutions.

